

P1E Homelessness Statistical Analysis

Figure 1.1 Breakdown of NI 156 Number of households living in Temporary Accommodation

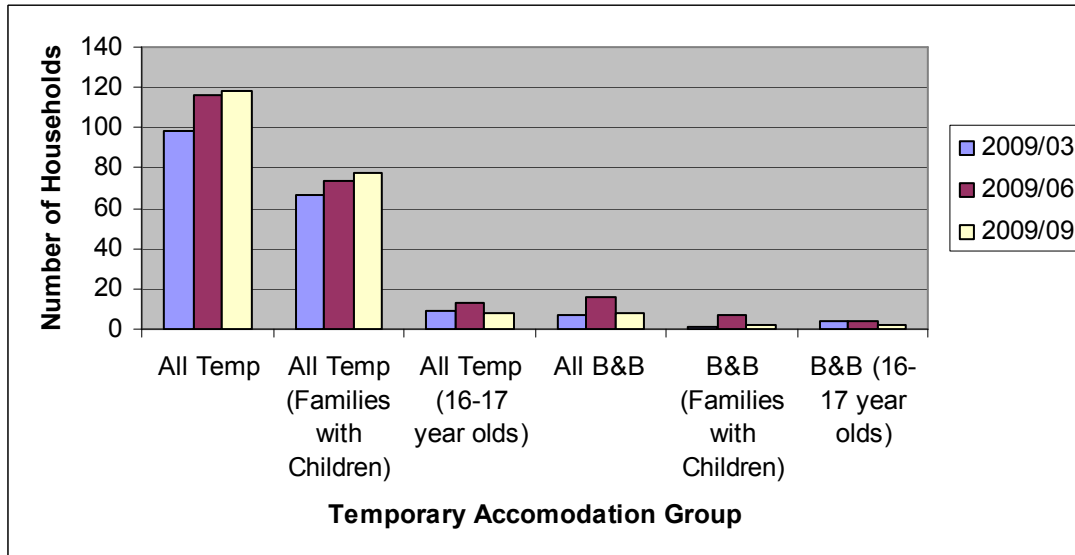
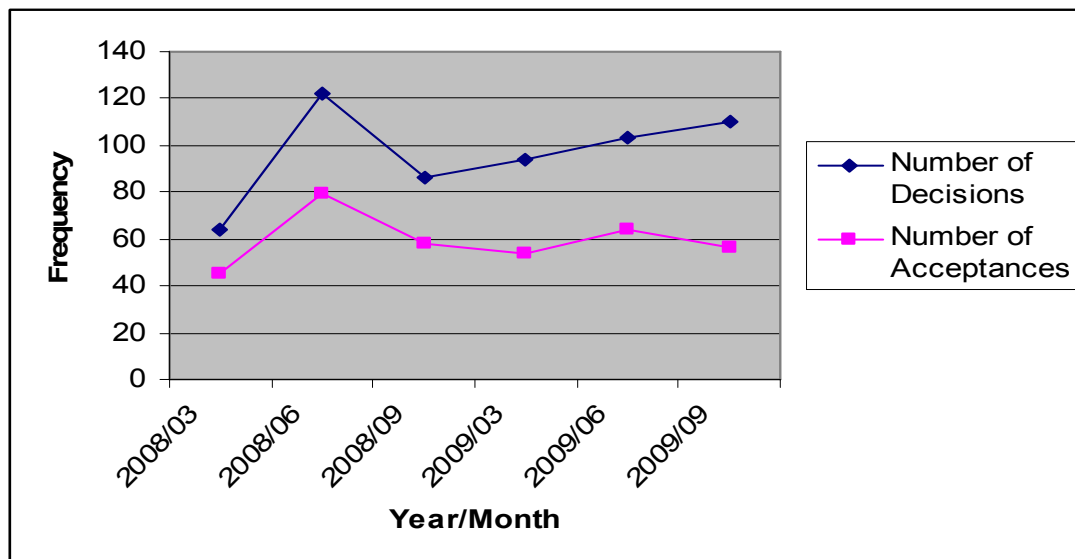


Figure 1.1 shows that the number of households in temporary accommodation increased during 2009 from 98 at the end of Quarter 1 to 118 at the end of Quarter 3. This compares to 111 households at the same time last year. It should be pointed out that although this figure is well below target, the total number of households in temporary accommodation at the end of December 2009 had decreased to 97 and activity is taking place in order to decrease this figure further and achieve the target of 82 households for NI 156 by the end of the Financial Year.

Figure 1.2 Numbers of Homeless Decisions/Acceptances



As can be seen in Figure 1.2, in terms of the numbers of people presenting as homeless per quarter i.e. decisions made so far during 2009, the number has increased as the year has gone on from 94 at the end of Quarter 1 to 110 at the end of Quarter 3. The number of acceptances however has not followed this pattern, increasing from 54 to 64 between Quarters 1 and 2 before decreasing to 56 at the end of Quarter 3. Looking at this years

position overall, compared to the same period last year, while the number of persons presenting as homeless has risen from 272 to 307, the number of Acceptances has decreased from 182 to 174.

Figure 1.3 Breakdown of Eligible Household Groups

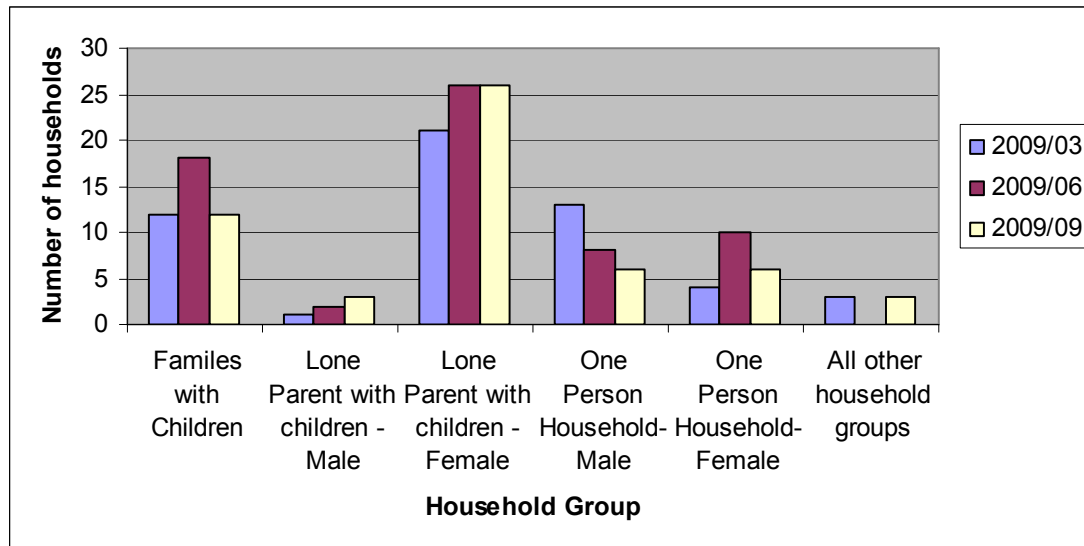


Figure 1.3 shows a breakdown of those households accepted as eligible so far during 2009/10 financial year, the largest proportion of which is the 'Lone Parent with Children-Female Applicant' category with a total of 73 households accepted as eligible.

Figure 1.4 Breakdown of Vulnerable Groups accepted as eligible for Homeless provision

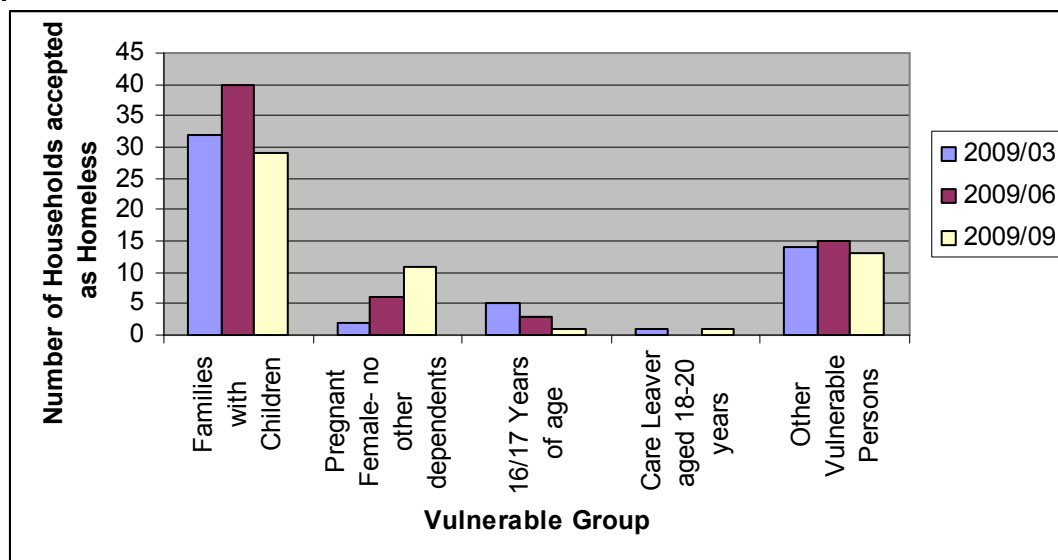


Figure 1.4 shows that the largest vulnerable group presenting and being accepted as homeless during 2009/10 is the 'Families with children' group with 101 acceptances. This figure is slightly lower than for the same period last year (106 households).

This appendix gives a summary of some of this data, for further information contact Chris Jones by email at chris.jones@herefordshire.gov.uk or telephone 01432 261596.